



Perfect Wireless Experience  
完美无线体验

---

# FIBOCOM L860-GL\_Flash Guideline

Version: V1.0.0  
Date: 2018.06.12





## Applicability type

No.	Product model	Description
1	L860-GL	Flash Guideline



## **Copyright**

Copyright ©2018Fibocom Wireless Inc. All rights reserved.

Without the prior written permission of the copyright holder, any company or individual is prohibited to excerpt, copy any part of or the entire document, or transmit the document in any form.

## **Attention**

The document is subject to update from time to time owing to the product version upgrade or other reasons. Unless otherwise specified, the document only serves as the user guide. All the statements, information and suggestions contained in the document do not constitute any explicit or implicit guarantee.

## **Trademark**



The trademark is registered and owned by Fibocom Wireless Inc.



## Versions

Version	Update Date	Author	Description
V1.0.0	2018-06-12	KAKA Tang	Initial Creation

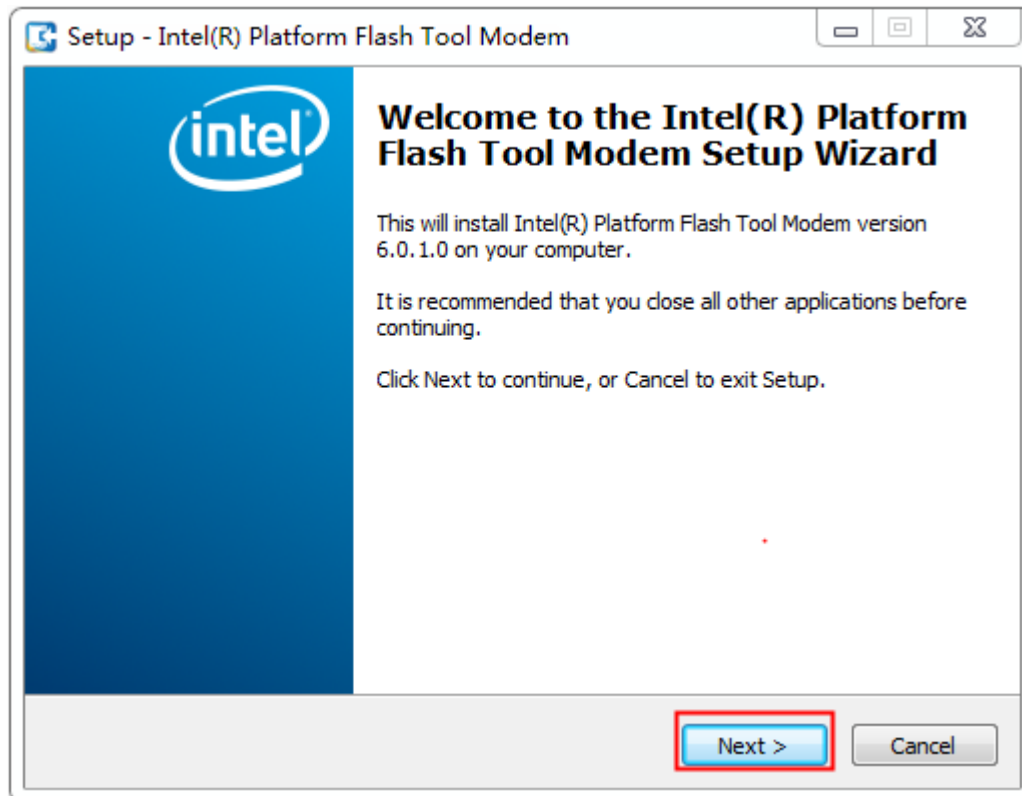


# Contents

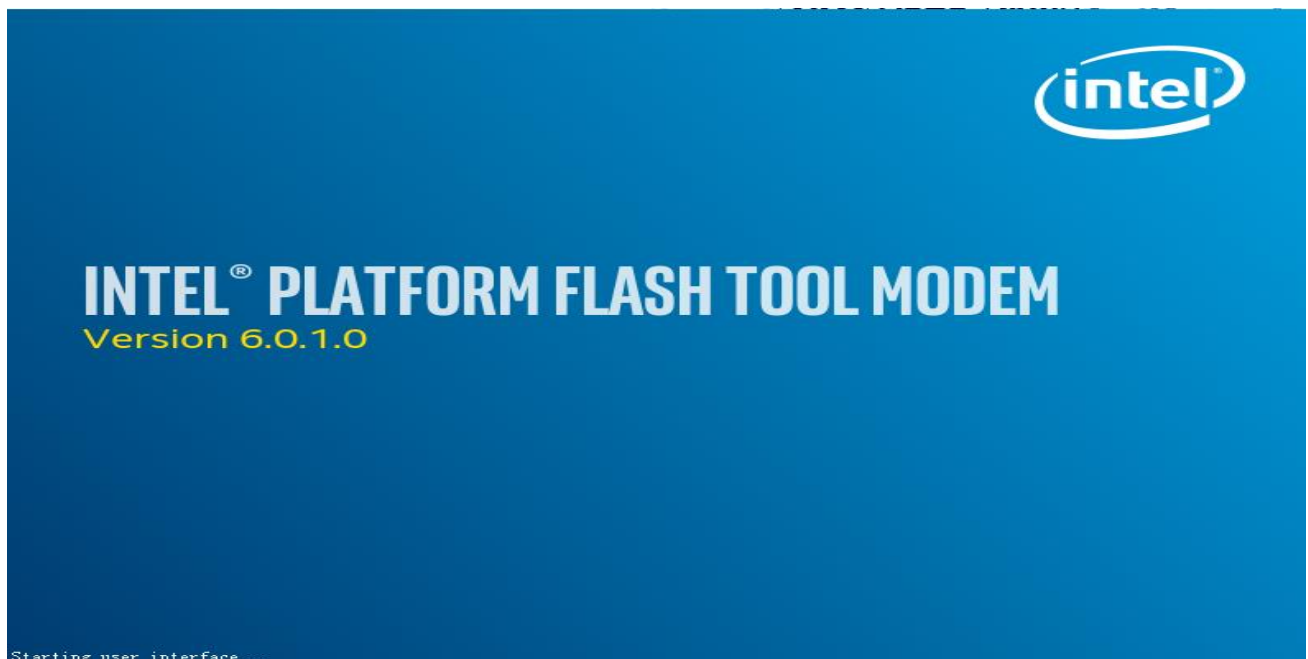
- 1 Flashtool installation ..... 1
- 2 Related settings ..... 2
- 3 Loading software..... 2
- 4 Start to flash..... 3
- 5 Query version..... 6

## 1 Flashtool installation

名称	修改日期	类型	大小
L860-GL FW Flashtool Manual.doc	2018-05-02 18:39	Microsoft Word ...	624 KB
PlatformFlashToolModem_6.0.1.0_internal_win32.exe	2018-04-12 17:48	应用程序	23,576 KB

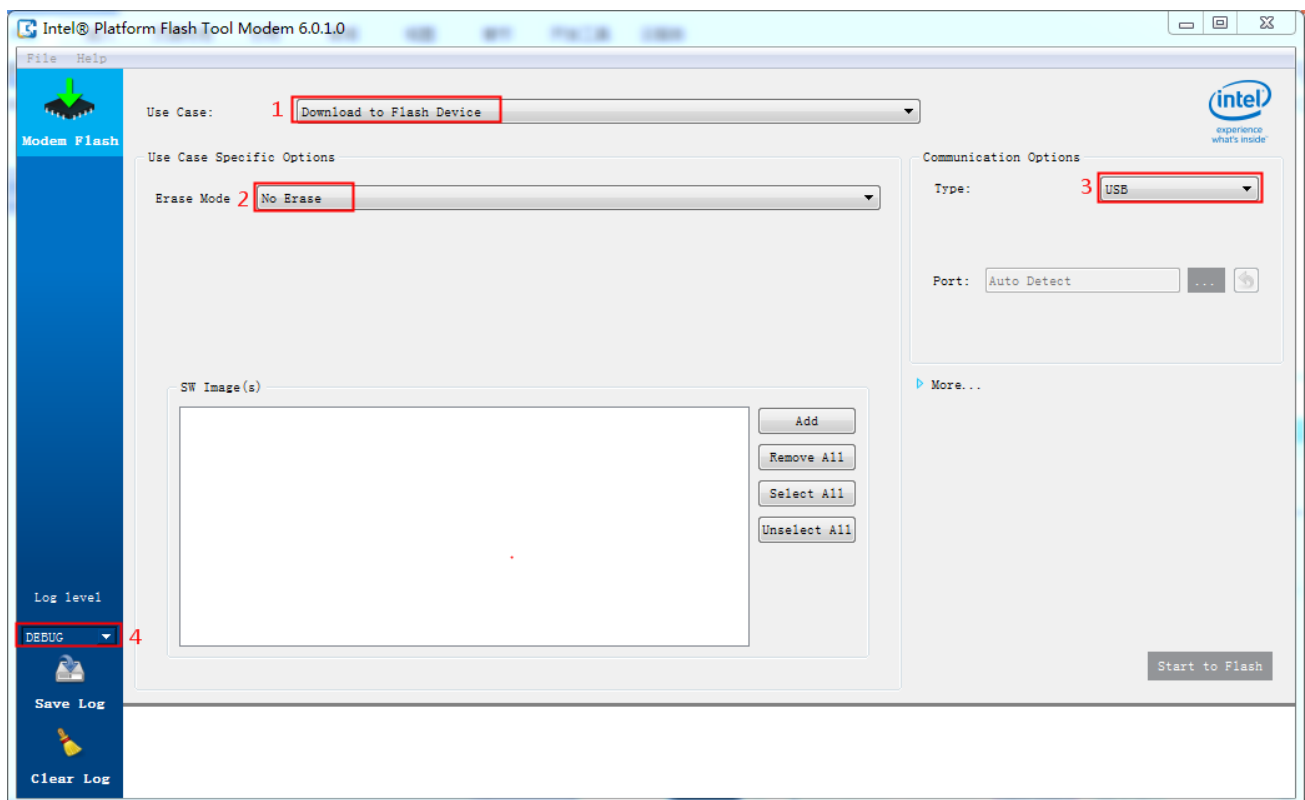


Installation completed



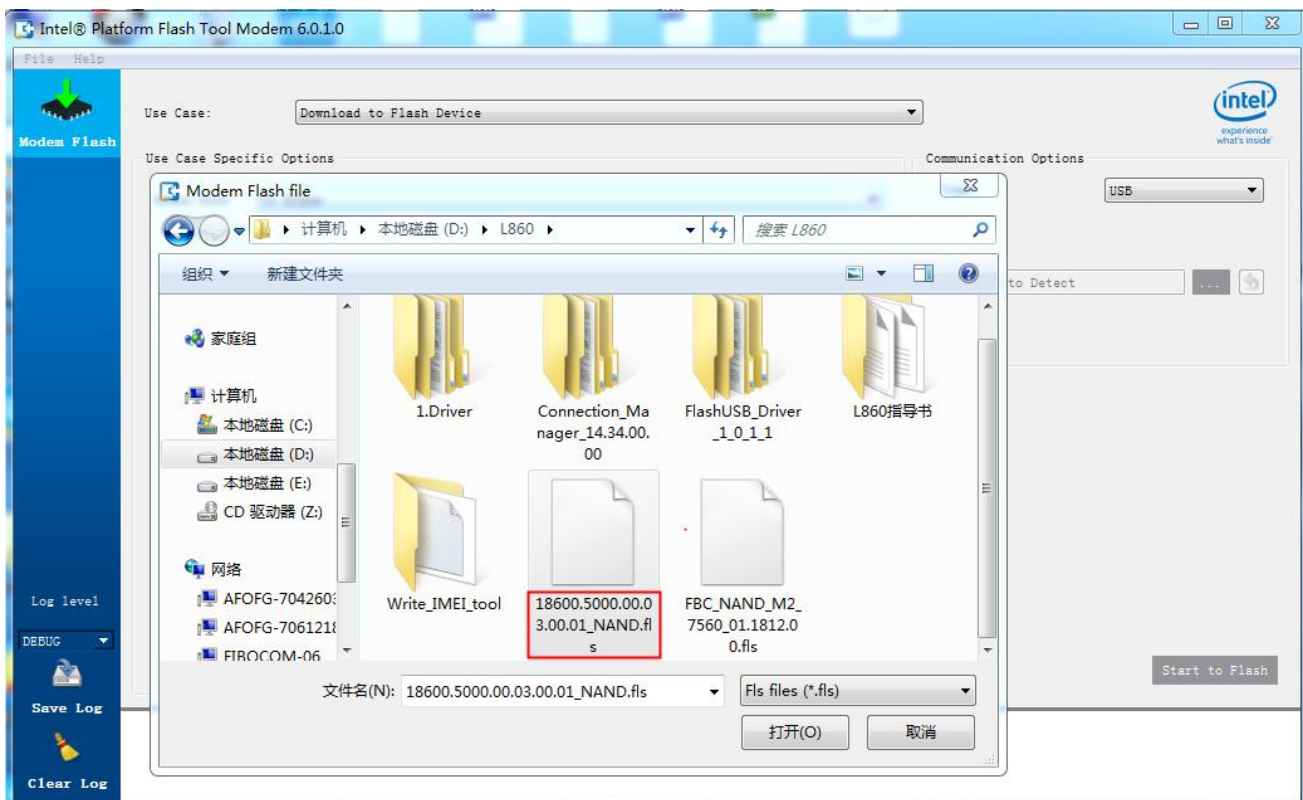
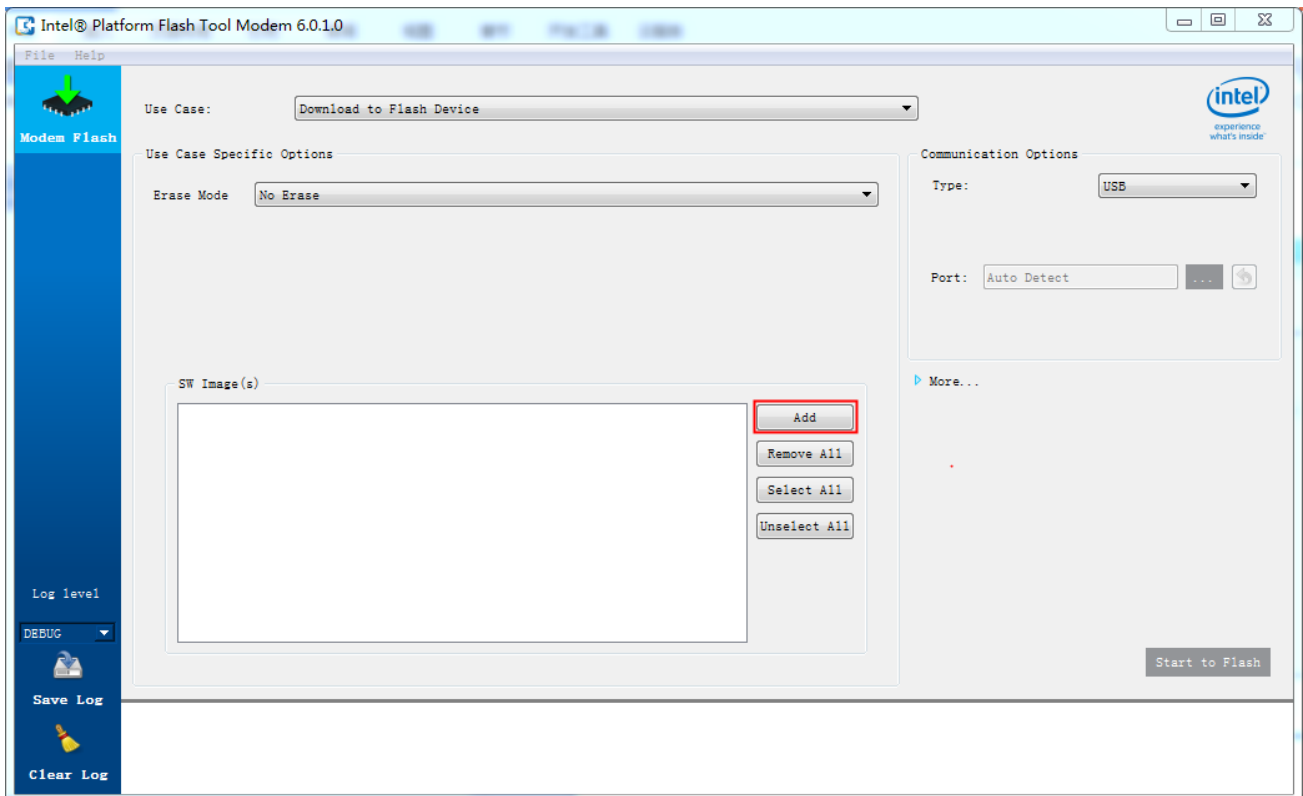
## 2 Related settings

- Use Case: Download to Flash Device
- Erase Mode: No Erase
- Type: USB
- Log level: DEBUG



## 3 Loading software

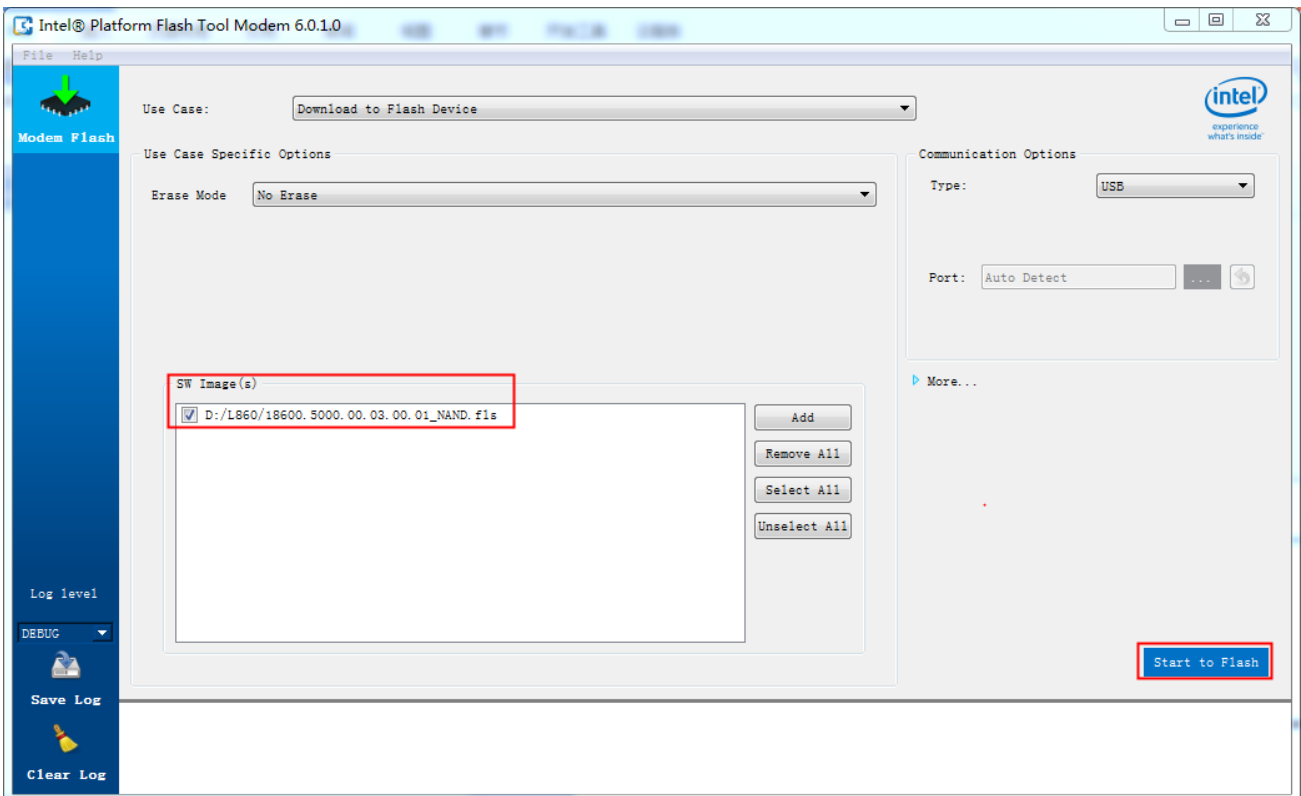
Click "Add" button to add software



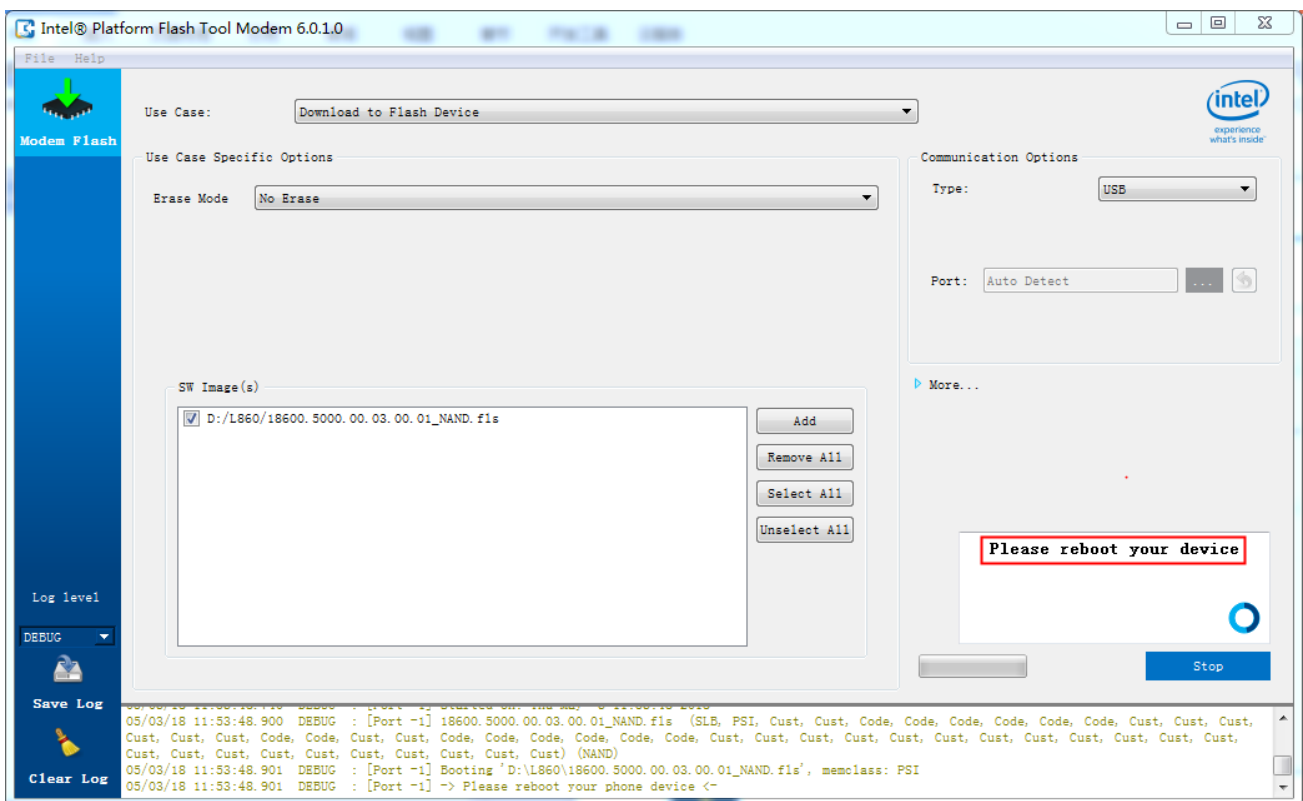
## 4 Start to flash

After loading the software, click the "start to flash" button to upgrade the software



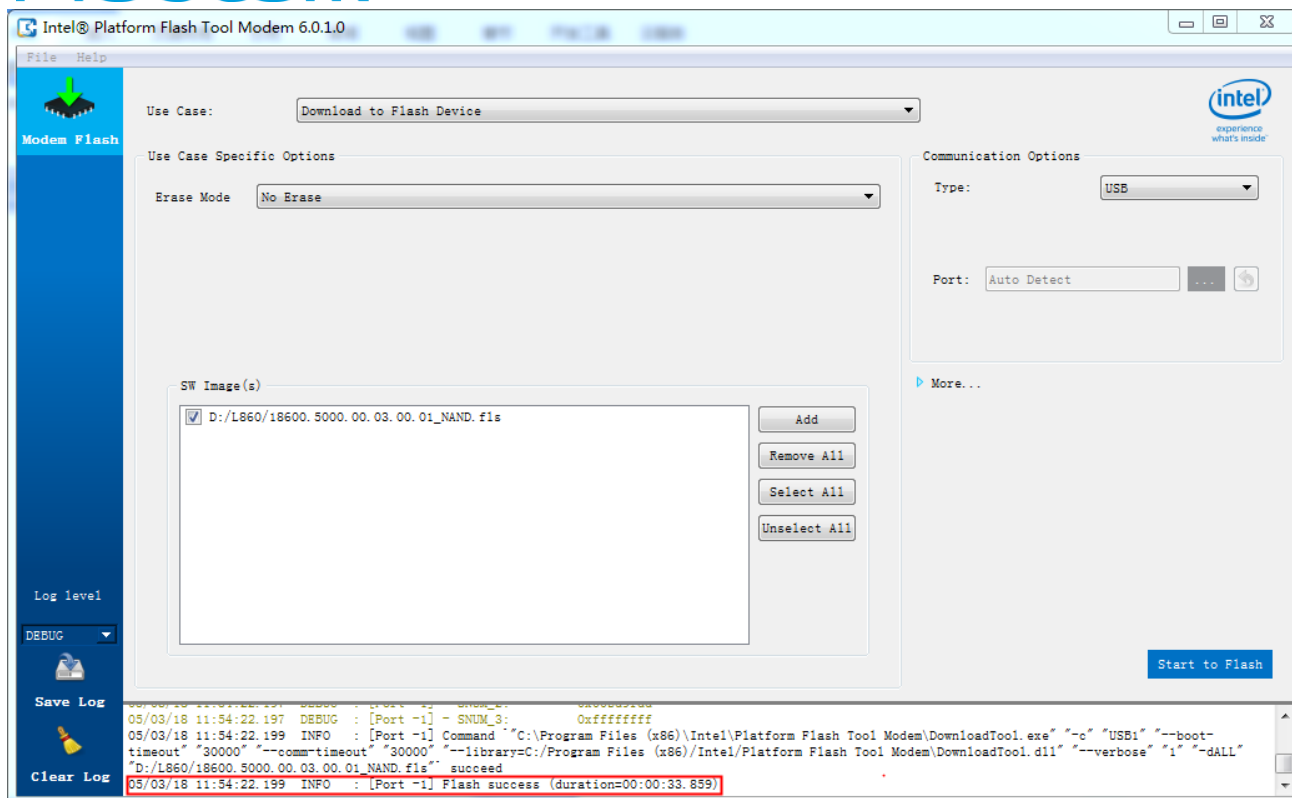


When you click the "start to flash" button, you are prompted to restart the device, so you need to press the power switch to restart the module.





When the upgrade is complete, you can see the "flash success" character



## 5 Query version

Once the upgrade is complete, you can use the serial port tool to send ati8 or at+cgmr to query software version.

